

Checklist – Industry

Company: _____	Date: _____
Address: _____	Tel.: _____
Contact for inquiries: _____	Fax: _____
Dept.: _____	E-mail: _____

1 Stroke length

- Total stroke length 900 mm
 Total stroke length _____ mm Effective stroke (when less than total stroke): _____ mm

2 Static load

Retracted



Compression load _____ kN
 Tensile load _____ kN

Intermediate posn. during stroke _____ mm



Compression load _____ kN
 Tensile load _____ kN

Extended



Compression load _____ kN
 Tensile load _____ kN

3 Load to be moved dynamically

Tensile and compressive force: _____ kN

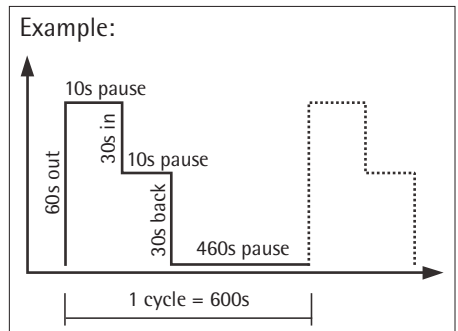
4 Stroke speed

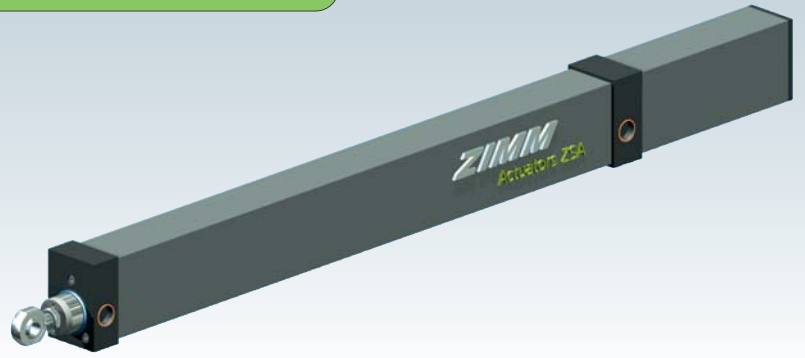
- 2-3 mm/s Min. _____ mm/s Max. _____ mm/s _____ mm/s

5 Duty cycle duration

Duty cycle duration in % per 10 min.: _____ % 8h/day 16h/day 24h/day _____ h/day
 or: _____ cycles (extend and retract) per hour per day

Work cycle schema:





Checklist – Industry

6 Accessories

- Ball-joint head (standard) Fork head
 Pivot brackets LB _____

7 Connection



Drive side



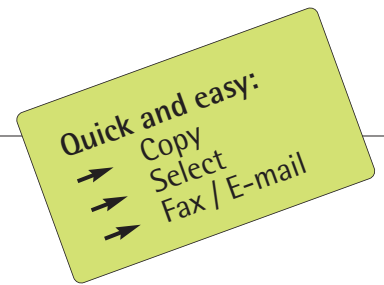
Thrust tube side

8 Operating conditions

Ambient temperatures (from/to): _____ °C

Misc. _____

- Quiet Vibrations Impact loads



Applications / Description / Drawing:

9 Schedule/Requirement:

- _____ pieces Delivery date: _____ Quotation by: _____
 Prototype Delivery date: _____

IMPORTANT: The "Checklist – Electronics" is also to be downloaded from our homepage www.zimm.at!
This checklist is also required for an inquiry.

