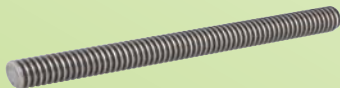


- Trapezoid threads
- Ball screw drives (rolled version)

ZIMM is your partner for threads.  
Standard components:



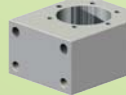
Trapezoid threads, Ø 10 mm to Ø 70 mm  
in stainless steel, Ø 12 mm to Ø 50 mm

Wide range of trapezoid thread nuts:

Flange nut BFM



Driving flange TRMFL  
fitting to flange nut



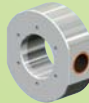
Self-aligning nut PM



Duplex nut DM



Cardan adapter DMA



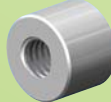
Greaseless nut FFDM



Long bronze nut LRM



Short steel nut KSM



Hex nut SKM



Ball screws in rolled version:



with flange nut to DIN 69051



with cylinder nut to DIN 69051

We would be pleased to process the **threads according to your drawing**  
or we deliver **specific parts** meeting your requirements.

Address yourself to our sales experts - we are gladly at your disposal.



**Martin Gfall**, Transmission Parts Manager  
E. [m.gfall@zimm.at](mailto:m.gfall@zimm.at)  
T. 0043 (0) 5577 / 806-23

**Michael Natter**, Sales Division  
E. [m.natter@zimm.at](mailto:m.natter@zimm.at)  
T. 0043 (0) 5577 / 806-36